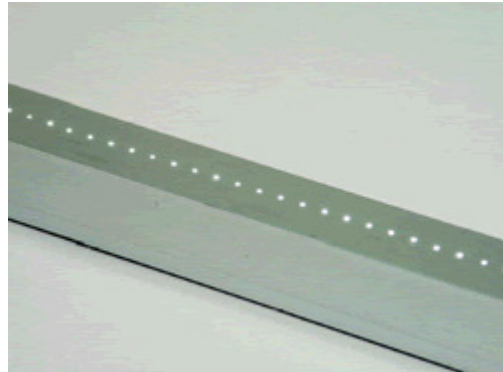


# EFO LightBeam



## EFO LightBeam

### Description:

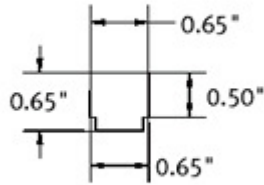
LightBeam by Fiberstars® makes it possible to illuminate along a linear path with the light aimed exactly where you want it and at exactly the right intensity. The light that is directed has no electrical hazard, no ultraviolet rays, and is virtually infra-red free. Low profile, linear light fixture. Square shape available in standard and compact frames as well as low, medium and high light intensities. Quality aluminum extrusion of rugged construction.

## EFO LightBeam Specifications

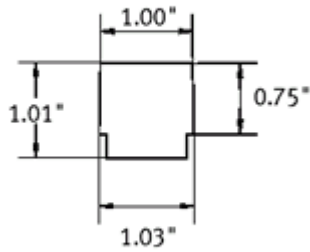
<b>Beam Spread:</b>	60
<b>Max Lit Lengths:</b>	Standard size: High intensity 50" (1270mm), Medium intensity 83" (2108mm) Compact size: High intensity 16" (406mm), Medium intensity 28" (711mm)
<b>Base Sizes:</b>	Standard Size: 1" (25.4mm) square Compact Size: 0.65" (16.5mm) square
<b>Mounting:</b>	MB, or similar surface mount
<b>Technical Remarks:</b>	Emits a wash of light along an axis. Wash intensity increases when fiber spacing decreases.
<b>Cable Diameters:</b>	Standard Size: .875" (22.2mm) Max Compact Size: 0.56" (14.2mm) Max
<b>Max Illum Fiber Capacity:</b>	500 Fibers Per Port

## EFO LightBeam Drawings

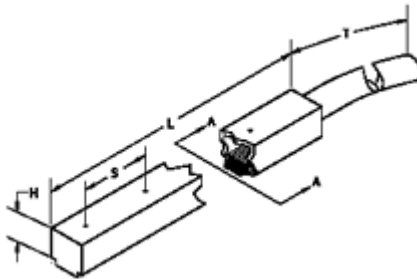
Compact Base Configuration:



Standard Base Configuration:



Isometric:



**Isometric**

**Key:**

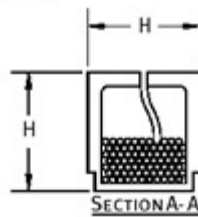
**H** Base Size

**L** Length Up To 120"

**S** Fiber Spacing (0.25", 0.5", or 1")

**T** Tail Length

Cross Section:



**EFO LightBeam Ordering Guide**

Sample: EFO-LB-49-20-H-S-S-R

EFO-LB

EFO-LB Lit Length: Tail Length: Wash Intensity:  
 ( ) Specify ( ) Specify ( ) Specify  
 inches feet fibers/inch  
**H** High (10 fibers/inch)  
**M** Med (6 fibers/inch)

Base Size:  
**S** Standard (1")  
**C** Compact (.625")

Finishes:  
**S** Standard Clear  
Anodized  
**B** Black Anodized

Tail Exit:  
**L** Left  
**R** Right  
**C** Custom