

# FIBER

Stranded • Star Systems • Large Core

<b>FIBER</b>	<b>64-79</b>
Stranded	66
Star Systems	72
Large Core	76



Austin Reed Ltd.  
London | UK



**FiberSpots Fiber**

- End emitting stranded fiber optic cable in flexible PMMA (polymer)
- Can be cut, harnessed, and ferruled at the factory or in the field
- White light transmission losses are typically 0.7% per foot
- Robust 0.75mm dia. fibers are resistant to breakage
- Minimum bend radius is 4x outer diameter
- Recommended maximum length up to 30'



Product Name	Qty. of Strands	Outer Diameter		Min Bend Radius		Max Spool Length ft	Outer Jacket
		inches	mm	inches	mm		
FSPT-1	1	0.17	4	0.68	17	1000	Black PVC
FSPT-2	2	0.17	4	0.68	17	1000	Black PVC
FSPT-3	3	0.18	5	0.72	18	1000	Black PVC
FSPT-5	5	0.18	5	0.72	18	1000	Black PVC
FSPT-8	8	0.18	5	0.72	18	1000	Black PVC
FSPT-10	10	0.25	6	1.00	25	1000	Black PVC
FSPT-12	12	0.25	6	1.00	25	1000	Black PVC
FSPT-18	18	0.25	6	1.00	25	1000	Black PVC
FSPT-25	25	0.27	7	1.08	27	1000	Black PVC
FSPT-30	30	0.27	7	1.08	27	1000	Black PVC
FSPT-50	50	0.41	10	1.64	42	1000	Black PVC
FSPT-62	62	0.44	11	1.76	45	1000	Black PVC
FSPT-75	75	0.44	11	1.76	45	1000	Black PVC
FSPT-100	100	0.52	13	2.06	52	600	Black PVC
FSPT-150	150	0.61	15	2.44	62	500	Black PVC
FSPT-200	200	0.70	18	2.80	71	250	Black PVC
B225	225	0.78	20	3.10	79	250	Black PVC
B300	300	0.83	21	3.30	84	250	Black PVC

*Use LB-HK-3, FS-163, or FS-118 tools for ferruling and harnessing. See page 102 for more information.*

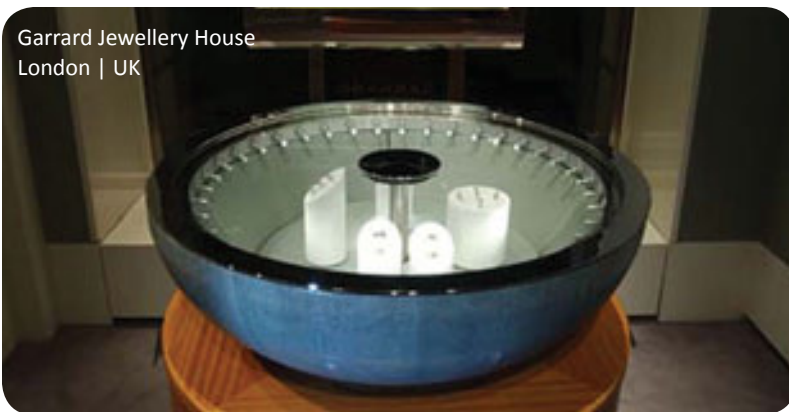


### FireRated Jacket Fiber

- End emitting stranded fiber optic cable in flexible PMMA (polymer)
- Fiber is UL tested to IEC\* 60332-1 standard
- Can be cut, harnessed, and ferruled at the factory or in the field
- White light transmission losses are typically 0.7% per foot
- Minimum bend radius is 4x outer diameter
- Recommended maximum length up to 30'

Product Name	Qty. of Strands	Outer Diameter		Min Bend Radius		Max Spool Length ft	Outer Jacket	Note
		inches	mm	inches	mm			
FSPT-EU-03	3	0.17	4	0.68	17	1000	Black PVC	Tested to IEC 60332-1 standard
FSPT-EU-06	6	0.20	5	0.80	20	1000	Black PVC	Tested to IEC 60332-1 standard
FSPT-EU-12	12	0.25	6	1.00	25	1000	Black PVC	Tested to IEC 60332-1 standard
FSPT-EU-25	25	0.29	7	1.16	29	1000	Black PVC	Tested to IEC 60332-1 standard
FSPT-EU-37	37	0.37	9	1.48	38	1000	Black PVC	Tested to IEC 60332-1 standard
FSPT-EU-50	50	0.42	11	1.68	43	1000	Black PVC	Tested to IEC 60332-1 standard
FSPT-EU-62	62	0.45	11	1.80	46	1000	Black PVC	Tested to IEC 60332-1 standard
FSPT-EU-75	75	0.48	12	1.92	49	1000	Black PVC	Tested to IEC 60332-1 standard

Use LB-HK-3, FS-163, or FS-118 tools for ferruling and harnessing. See page 102 for more details.  
 \*IEC: International Electrotechnical Commission





Beijing World Art Museum  
Hai Dian District, Beijing | China

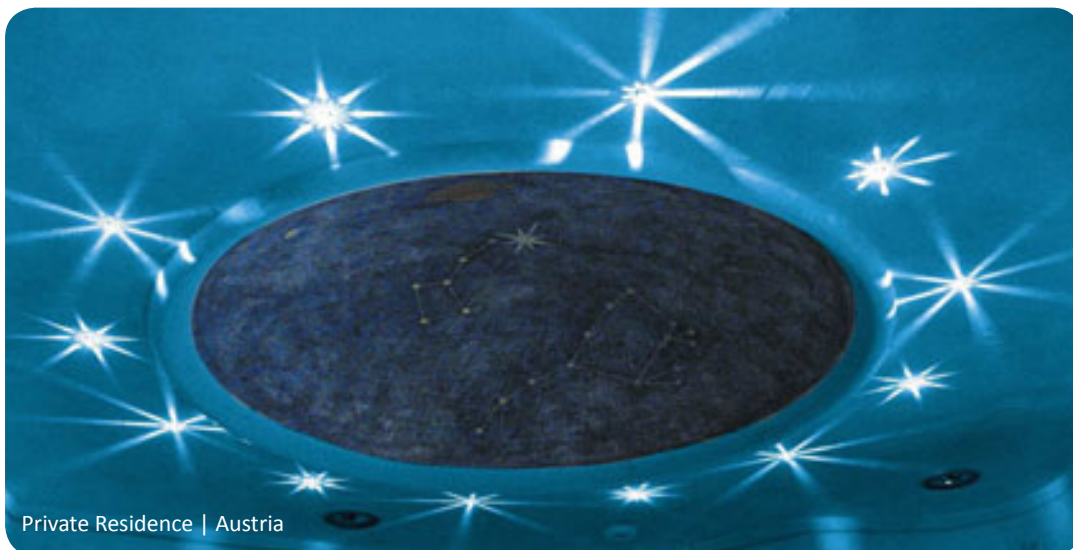


**StarCable Fiber**

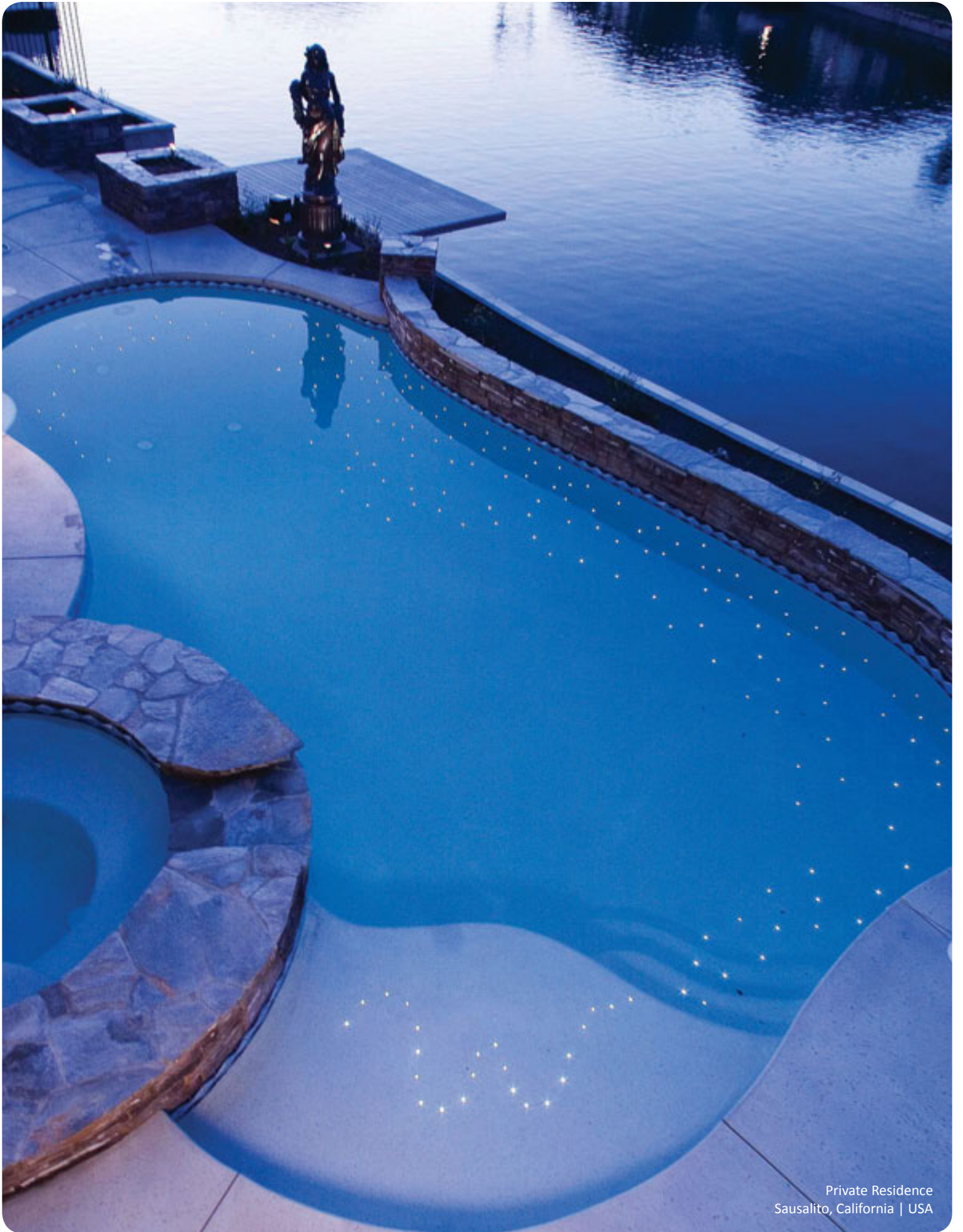
- End emitting stranded fiber optic cable in flexible PMMA (polymer)
- Ideal to create star ceilings and other lighting effects
- Can be cut and harnessed at the factory or in the field
- White light transmission losses are typically 0.7% per foot
- Minimum bend radius is 4x outer diameter
- Recommended maximum length up to 30'

Product Name	Qty. of Strands	Outer Diameter		Min Bend Radius		Max Spool Length	Outer Jacket	Note
		inches	mm	inches	mm	ft		
FS-30-J-2.2	1	0.09	2	0.37	9	1000	Black PVC	Contains (1) 0.75mm dia. strand
FS-40-J-2.2	1	0.09	2	0.37	9	1000	Black PVC	Contains (1) 1.00mm dia. strand
FS-60-J-2.2	1	0.09	2	0.37	9	1000	Black PVC	Contains (1) 1.50mm dia. strand
FS-80-J-3.0	1	0.12	3	0.49	12	1000	Black PVC	Contains (1) 2.00mm dia. strand
STAR-34/50	34	0.44	11	1.76	45	1000	Black PVC	Contains 34 strands, 24@0.75, 7@1.0, 3@1.5

Use LB-HK-3, FS-163 tools for harnessing. See page 102 for more details.



Private Residence | Austria



Private Residence  
Sausalito, California | USA



*“Keep your eyes on the stars,  
and your feet on the ground.”*

*-Theodore Roosevelt*

# STAR

FIBER OPTIC

SYSTEMS



## NIGHT SKY

Part# Star\_KitA

300 points of light  
Covers 75 - 125 square feet

(1) FS-11L-SPW/NC-120-005  
71Watt/120V Illuminator with  
Sparkle Wheel

(1) Bundle of 9 STAR-34/50  
fiber optic cables, 10 feet long



## GALAXY

Part# Star\_KitB

500 points of light  
Covers 150 - 225 square feet

(1) FS-1L-SPW/NC-120-005  
95Watt/120V Illuminator with  
Sparkle Wheel

(1) Bundle of 9 STAR-34/50  
fiber optic cables, 10 feet long

(1) Shooting Star



## UNIVERSE

Part# Star\_KitC

800 points of light  
Covers 250 - 300 square feet

(1) FS-1L-SPW/NC-120-005  
95Watt/120V Illuminator with  
Sparkle Wheel

(1) Bundle of 18 STAR-34/50  
fiber optic cables, 20 feet long

(2) Shooting Stars

*Included in all systems: (1) FS-DP4 Packet of four Drill Bits, (1) Tube Adhesive Caulk  
You will need: Electric Drill, Eye Protection, Caulk Gun, Sharp Wire Cutters, Felt Tip Pen*



**BritePak & BritePak Diamond**

- Side emitting stranded fiber optic cable in flexible PMMA (polymer)
- Can be cut and harnessed at the factory or in the field
- Patented cabling method allows maximum light distribution through the clear outer jacket
- Recommended maximum length up to 50' for indirect applications and 100' for direct view applications
- Minimum bend radius is 4x outer diameter
- Little color shift over long lengths

Product Name	Qty. of Strands*	Outer Diameter inches	Outer Diameter mm	Min Bend Radius inches	Min Bend Radius mm	Max Spool Length ft	Outer Jacket
BPAK-15	14	0.21	5	0.83	21	1000	Clear PVC
BPAK-42	42	0.34	9	1.29	33	1000	Clear PVC
BPAK -50	49	0.34	9	1.30	33	1000	Clear PVC
BPAK -75	77	0.43	11	1.58	40	800	Clear PVC
BPAK -100	98	0.51	13	1.86	47	600	Clear PVC
BPAK -150	140	0.61	15	2.24	57	500	Clear PVC
SS-15	14	0.21	5	0.77	20	500	Clear PVC w/ Black Tedlar Tape
SS-50	49	0.34	9	1.29	33	500	Clear PVC w/ Black Tedlar Tape

Use LB-HK-3 or FS-163 tools for harnessing. See page 102 for more details.

\* Fiber is cabled in bundles of seven





Qibla prayer wall in the Grand Mosque  
Abu Dhabi | United Arab Emirates



### FiberJack Fiber

- End emitting large core fiber optic cable
- Solid core optical fiber providing the highest light output
- Minimum bend radius is 8x core diameter
- Available in standard lengths from 6' to 25'
- Pre-cut and ported at the factory; no field cutting, harnessing, and ferruling required
- Use with EFO33, EFO44 and LED e-Luminator series Illuminators

Product Name	Core Diameter		Outer Diameter		Min Bend Radius		Absolute Length ft	Outer Jacket	Illuminator Use
	inches	mm	inches	mm	inches	mm			
EFOFJ-12/10MM-06	0.43	11	0.49	12.5	3.46	88	6	White PE	EFO44, e-Luminator
EFOFJ-12/10MM-08	0.43	11	0.49	12.5	3.46	88	8	White PE	EFO44, e-Luminator
EFOFJ-12/10MM-10	0.43	11	0.49	12.5	3.46	88	10	White PE	EFO44, e-Luminator
EFOFJ-12/10MM-12	0.43	11	0.49	12.5	3.46	88	12	White PE	EFO44, e-Luminator
EFOFJ-12/10MM-14	0.43	11	0.49	12.5	3.46	88	14	White PE	EFO44, e-Luminator
EFOFJ-12/10MM-16	0.43	11	0.49	12.5	3.46	88	16	White PE	EFO44, e-Luminator
EFOFJ-12/10MM-18	0.43	11	0.49	12.5	3.46	88	18	White PE	EFO44, e-Luminator
EFOFJ-12/10MM-20	0.43	11	0.49	12.5	3.46	88	20	White PE	EFO44, e-Luminator
EFOFJ-12/10MM-22	0.43	11	0.49	12.5	3.46	88	22	White PE	EFO44, e-Luminator
EFOFJ-12/10MM-25	0.43	11	0.49	12.5	3.46	88	25	White PE	EFO44, e-Luminator
EFOFJ-14/12MM-06	0.47	13	0.59	15	4.09	104	6	White PE	EFO33, e-Luminator
EFOFJ-14/12MM-08	0.47	13	0.59	15	4.09	104	8	White PE	EFO33, e-Luminator
EFOFJ-14/12MM-10	0.47	13	0.59	15	4.09	104	10	White PE	EFO33, e-Luminator
EFOFJ-14/12MM-12	0.47	13	0.59	15	4.09	104	12	White PE	EFO33, e-Luminator
EFOFJ-14/12MM-14	0.47	13	0.59	15	4.09	104	14	White PE	EFO33, e-Luminator
EFOFJ-14/12MM-16	0.47	13	0.59	15	4.09	104	16	White PE	EFO33, e-Luminator
EFOFJ-14/12MM-18	0.47	13	0.59	15	4.09	104	18	White PE	EFO33, e-Luminator
EFOFJ-14/12MM-20	0.47	13	0.59	15	4.09	104	20	White PE	EFO33, e-Luminator
EFOFJ-14/12MM-22	0.47	13	0.59	15	4.09	104	22	White PE	EFO33, e-Luminator
EFOFJ-14/12MM-25	0.47	13	0.59	15	4.09	104	25	White PE	EFO33, e-Luminator
EFOFJ-F-12/10MM-10	0.39	11	0.49	12.5	3.46	88	10	White PE	EFO44 and MBF-F Fixture
EFOFJ-F-14/12MM-10	0.47	13	0.59	15	4.09	104	10	White PE	EFO33 and MBF-F Fixture
EFOFJ-10-00-10	0.39	11	0.49	12.5	3.46	88	10	White PE	EFO44 and LPSII Fixture

See page 39 for more information on our Large Core Fiber Optic System.

**TT EdgeGlow**

- Side emitting large core fiber optic cable with Teflon® outer jacket
- Titanim Technology solid core optical fiber providing the highest light output
- Minimum bend radius is 10x core diameter
- Recommended in length up to 30' for single end illumination and up to 50' for double end illumination
- Recommended pre-cut and ported at the factory; no field cutting, harnessing, and ferruling required
- Use with EFO33 & LED e-Luminator series Illuminators
- EG-S-KIT for single end illumination and EG-D-KIT for double end illumination



Product Name	Core Diameter		Outer Diameter		Min Bend Radius		Max Length ft	Outer Jacket	Illuminator use
	inches	mm	inches	mm	inches	mm			
EG-12-S-xx-EG-S-KIT	0.47	12.5	0.51	13.5	4.70	125	30	Opaque	EFO33, LED e-Luminator
EG-12-D-xx-EG-D-KIT	0.47	12.5	0.51	13.5	4.70	125	50	Opaque	EFO33, LED e-Luminator



Hotel Eisenhut  
Rothenburg o.d.T. | Germany



energy efficient  
**green** choices



**15Watts**

**LED DockLight | see page 60**

LED DockLights offer energy efficient high output bright light in a durable exterior. Available with narrow spot and spot beam distribution for short and long trailers.



**7.5Watts**

**LED GlobeLight | see page 61**

LED GlobeLights offer high intensity LED lighting with low power consumption and with 50,000 hours lamp life they are energy efficient as well as sustainable. Also available in 12, 15, 23 and 26 Watts.



**10Watts** (per fixture)

**EFO 44 | see page 88**

One 80 Watt EFO® system with eight fixtures can replace eight 50 Watt MR16 halogen lamps; replacing 400 Watts and reducing energy consumption by 80%.



**18Watts**

**LED e-Luminator | see page 82**

This versatile illuminator is compact in size and is compatible with both large core and stranded fiber optic cables. Available in RGB or white for interior or exterior applications.



**26Watts**

**LED LandScape | see page 62**

Clean white light and low energy consumption make this fixture a perfect low maintenance 'green' alternative to traditional outdoor lighting technologies. Available in various beam spreads.

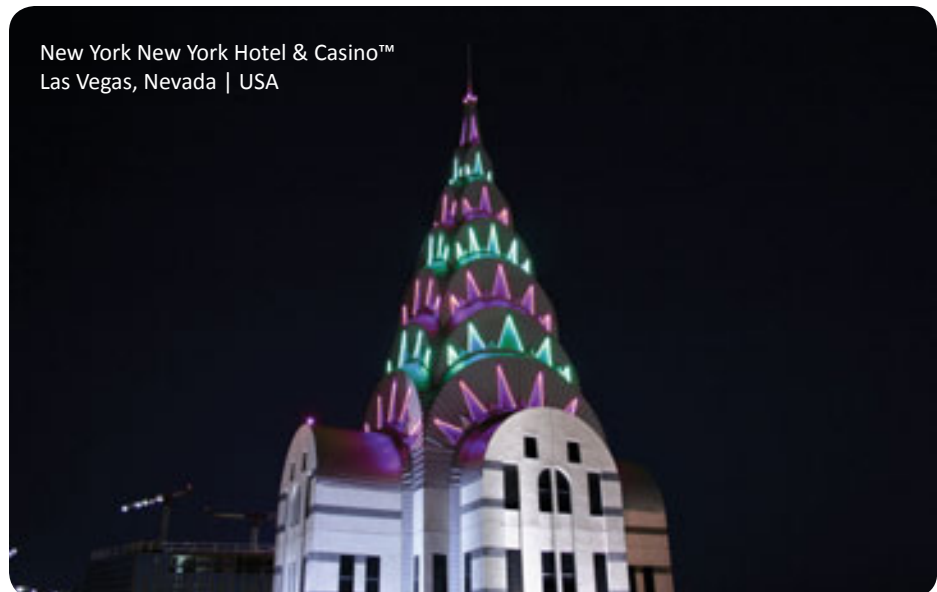


**RT DirectGlow**

- Side emitting large core fiber optic cable
- Reflector Technology for directional light output
- Optical fiber core must be protected in wet or sunlit areas
- Use end seals where applicable
- Protect core and cladding from dirt and abrasions
- Install fiber at temperatures of 10° C (50° F) or higher
- Lead dependent; minimum of 1’ per lit end
- Always specify lead and total length
- For underwater use, add -WR for factory encased jacketing
- Use with EFO Metal Halide (M products) or LED e-Luminator (S products) Illuminators only



Product Name	Core Diameter		Outer Diameter		Min Bend Radius		Max Length Single Lit feet	Max Length Double Lit feet	Beam Spread	Illuminator Use
	inches	mm	inches	mm	inches	mm				
LEF410M	0.36	9.1	0.58	14.6	5.00	127	10	20	60°	EFO
LEF410S	0.36	9.1	0.58	14.6	7.00	178	12	25	60°	LED e-Luminator
LEF510M	0.49	12.5	0.76	19.3	6.00	152	20	40	60°	EFO
LEF510S	0.49	12.5	0.76	19.3	9.00	229	15	30	60°	LED e-Luminator
LEF710M	0.74	18.8	1.00	25.5	12.00	305	35	45	60°	EFO
LEF710S	0.74	18.8	1.00	25.4	12.00	305	20	40	60°	LED e-Luminator



New York New York Hotel & Casino™  
Las Vegas, Nevada | USA